

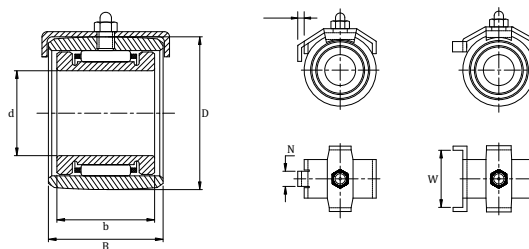


**PRODUCT FAMILY | TEXTILE**

**mrs**<sup>TM</sup>  
BEARINGS

## Bottom Roller Bearings

### Holder Locating Type



Designation	Dimensions				Holder		Interchangeble	
	d	D	b	B	Type N Center	Type W Side	INA	SKF
BR 2800	16.5	28	19	22	5.9	-	UWL 2800	-
BR 2820	16.5	28	19	22	-	20.2	UWL 2820	-
BR 2822	16.5	28	19	22	-	22.2	UWL 2822	-
BR 2824	16.5	28	19	22	-	24.2	UWL 2824	-
BR 2826	16.5	28	19	22	-	26.2	UWL 2826	-
BR 280023	16.5	28	19	23	5.9	-	-	UL 28-0003590
BR 282023	16.5	28	19	23	-	20.2	-	UL 28-0000416
BR 282223	16.5	28	19	23	-	22.2	-	UL 28-0000417
BR 282423	16.5	28	19	23	-	24.2	-	UL 28-0000418
BR 282623	16.5	28	19	23	-	26.2	-	UL 28-0010047
BR 282223 X	16.5	28	23	23	-	22.2	-	-
BR 282423 X	16.5	28	23	23	-	24.2	-	UL 28-0010083
BR 28242326	16.5	28	23	26	-	24.2	-	UL 28-0959273
BR 282423 XC	16.5	28	23	23	-	24.2	-	-
BR 3000*	18.5	30	19	22	5.9	-	-	UL 30-0003665
BR 3000	18.5	30	19	22	5.9	-	UWL 3000	UL 30-0007871
BR 3000 FT	18.5	30	19	22	5.9	-	-	UL 30-0028276
BR 3020	18.5	30	19	22	-	20.2	-	-
BR 3022	18.5	30	19	22	-	22.2	-	UL 30-0002610
BR 3026	18.5	30	19	22	-	26.2	-	UL 30-0018195
BR 301725.420**	17	30	25.4	20	-	-	-	-
BR 3200	19	32	20	23	5.9	-	UWL 3200	-
BR 3200 ST	19	32	20	23	-	-	-	-
BR 3200 STL	19	32	20	23	-	-	-	-
BR 3220	19	32	20	23	-	20.2	UWL 3220	-
BR 3220 L****	19	32	20	23	-	20.2	-	-

Designation	Dimensions				Holder		Interchangeble	
	d	D	b	B	Type N Center	Type W Side	INA	SKF
BR 3222	19	32	20	23	-	22.2	UWL 3222	-
BR 3224	19	32	20	23	-	24.2	UWL 3224	-
BR 3225	19	32	20	23	-	25.2	UWL 3225	-
BR 3226	19	32	20	23	-	26.2	UWL 3226	-
BR 320024	19	32	20	24	5.9	-	-	UL 32-0015143
BR 322024	19	32	20	24	-	20.2	-	-
BR 322224	19	32	20	24	-	22.2	-	UL 32-0000421
BR 322424	19	32	20	24	-	24.2	-	UL 32-0000422
BR 322524	19	32	20	24	-	25.2	-	UL 32-0000423
BR 322624	19	32	20	24	-	26.2	-	UL 32-0012499
BR 32-01-24**	24	32	-	22	-	24.2	-	-
BR 32-01-06**	24	32	-	22	5.9	-	FAG 10-2577	-
BR 3620	19	36	22	25	-	20.2	UW 2136.20	-
BR 3622	19	36	22	25	-	22.2	UW 2136.22	-
BR 3625	19	36	22	25	-	25.2	UW 2136.25	-
BR 3626	19	36	22	25	-	26.2	UW 2136.26	-
BR 362226	19	36	22	26	-	22.2	-	UL 32-0000424
BR 362426	19	36	22	26	-	24.2	-	UL 32-0000425
BR 362526	19	36	22	26	-	25.2	-	UL 32-0000426
BR 400024	23	40	21	24	5.9	-	-	UL- 40-0025408
BR 402424	23	40	21	24	-	24.2	-	-
BR 4000	23	40	23.5	27	5.9	-	UWL 4000	-
BR 4020	23	40	23.5	27	-	20.2	FAG 10-4393A	UL 40-0021786
BR 4025	23	40	23.5	27	-	25.2	UWL 4025	-
BR 2814.2(22)	14.2	28	10	18	-	22.2	-	-
BR 2814.216.623 (22)	14.2	28	16.6	23	-	22.2	-	UL 28-0959274
BR 2815(06)	15	28	13	16.8	5.9	-	-	-
BR 2815(24)	15	28	13	23	-	24.2	-	UL 28-0021159
BR 2816	16	28	22	26	-	-	-	-
BR 2816.3(06)	16.295	28	17	23	5.9	-	-	UL 28-0018230

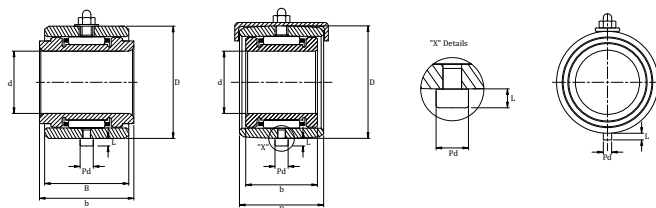
Designation	Dimensions				Holder		Interchangeble	
	d	D	b	B	Type N Center	Type W Side	INA	SKF
BR 2816(24)1323	16	28	13	23	-	24.2	-	UL 28-0021164
BR 3015.875***	15.875	30	25.4	20	-	-	-	-
BR 3016***	16	30	26	21	-	-	-	-
BR 3016(22)	16	30	26	22	-	22.2	-	UL 30-0026220
BR 3017(26)	17	30	19	22	-	26.2	-	UL 30-0021106
BR 3216.3(06)	16.3	32	17	20	5.9	-	-	UL 32-0023114
BR 3216.3(20)	16.3	32	17	20	-	20.2	-	-
BR 3216.5(06)	16.5	32	19	23	5.9	-	-	-
BR 3216.5(22)	16.5	32	19	23	-	22.2	-	-
BR 3217S	17	32	22	25	-	20.2	F 50995 A	-
BR 3217L****	17	32	22	25	-	20.2	F 50995 B	-
BR 3218.5(06)	18.5	32	19	22	5.9	-	-	UL 32-0019169
BR 3218.5(06)X	18.5	32	19	22	5.9	-	-	-
BR 3218-26***	18	32	26	23	-	-	-	-
BR 3219***	19	32	26	23	-	-	TEX Z 205	-
BR 3221(06)	21	32	19	23	5.9	-	-	UL 32-0016548
BR 3420	20	34	23	24	-	-	-	-
BR 3422	22	34	26	27	-	-	-	-
BR 3618.5(06)	18.5	36	19	22	5.9	-	-	UL 36-0014782
BR 3621(06)	21	36	22	26	5.9	-	FAG 10-446 IA	UL 36-0016442
BR 3621(20)	21	36	22	26	-	20.2	-	UL 36-0028421
BR 3621(22)	21	36	22	26	-	22.2	-	UL 36-0028421
BR 3719(25)26 X	19	37	26	26	-	25.2	-	-
BR 3719(22)	19	37	25	27	-	22.2	-	-
BR 4019(06)	19	40	21	24	5.9	-	SUSSEN UZ 401	-
BR 4225	22	42	25	29	-	20.2	-	-
BR 452429	25	45	25	29	-	24.2	-	-
BR 452529	25	45	25	29	-	25.2	-	-
BR 450029	25	45	25	29	5.9	-	-	UL 45-0959268
BR 2130(20)**	18	30	-	22	-	20.2	RUW 2130.20	-

Designation	Dimensions				Holder		Interchangeble	
	d	D	b	B	Type N Center	Type W Side	INA	SKF
BR 2130(22)**	18	30	-	22	-	22.2	RUW 2130.22	-
BR 2132(20)**	23	32	-	23	-	20.2	RUW 2132.20	-
BR 2134(25)**	22	34	-	27	-	25.2	RUW 2134.25	-
BR 2136(20)**	24	36	-	25	-	20.2	RUW 2136.20	-
BR 2140(20)**	28	40	-	24	-	20.2	RUW 2140.20	-
BR 20-3P**	20	32	-	25	-	-	NTN FR 20-3P	-



## Bottom Roller Bearings

### Pin Locating Type



Designation	Dimensions				Pin	Interchangeable	
	d	D	b	B		INA	SKF
BR 28(P)16	16	28	26	22	3 x 2.5	TEX Z 204	NTN FRIS 16x28
BR 28(P)16.5	16.5	28	23	22	3 x 2.5	-	-
BR 28(P)16.5(27)	16.5	28	27	23	2.5 x 2.0	-	-
BR 28(P)16.5(23X)	16.5	28	23	23	3 x 2.5	-	-
BR 30(P)15.875	15.875	30	25.4	20	2.5 x 2.5	NACHI 2B 15Z	-
BR 30(P)16	16	30	26	21	3 x 2.5	-	-
BR 31.5(P)18-24	18	31.50	24	23	2.5 x 2.5	-	-
BR 31.750(P)18	18	31.75	24	23	2.5 x 2.5	-	-
BR 32(P)01**	24	32	-	22	2.5 x 2	-	-
BR 32(P)18-24	18	32	24	23	2.5 x 2.5	NTN FRIS 183224 NP	-
BR 32(P)18-26	18	32	26	23	2.5 x 2.5	NTN FRIS 183226 NP	-
BR 32 (P)19	19	32	20	23	3 x 2.5	NTN FRIS 19 x 32 NP	-
BR 32 (P)19.26	19	32	26	23	3 x 2.5	-	-
BR 28(P) 22**	24	32	-	22	2.5 x 2	-	-
BR 34(P)18	18	34	21	26	2.5 x 2.5	-	-
BR 34(P) 20-26	20	34	26	23	3 x 2.5	-	-
BR 40(P)22-26	22	40	26	24	3 x 2.5	NTN FRIS 224026 NP	-
BR 42(P)25	25	42	26	24	4 x 4	-	-
BR 35(P)17 BB	17	35	22	22	4 x 4.2	SRO 12304	1785154
BR 47(P) 17BB	17	47	22	22	4 x 4.2	SRO 12280	1785152
BR 20(P)47	20	47	22.25	25	4 x 2.3	TORR AJ 31226	-
BR 17(P)34	17	34	27	30	4 x 2	-	-
BR 25(P)52	25	52	22	24	4 x 1.33	-	-
BR 26(P) 4344.6	26	43	27	32	2.5 x 2	-	-
BR 2129[P]**	21	29	-	30	2.5 x 2.5	-	-
BR 2140 [P]**	30	40	-	17	2.5 x 2.5	-	-

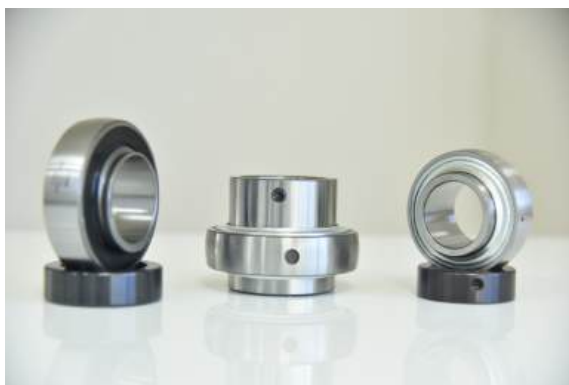
## Bottom Roller Bearings

for Ring Spining

Designation	Interchangeble	Designation	Interchangeble
M 75100	F-84174	M 76900	BR 3600 SPL (SPL CAGE)
M 76220	UW 2136.20	M 77826	TEX Z 232
M 75222	UW 2136.22	M 77322	BR 3222 SPL(16 NEEDLES)
M 75324	F-94733	M 77500	BR 3200 SPL(16 NEEDLES)
M 76100	F-56875-1	M 77600	BR 2800 SPL
M 75400	F-52364	M 77799	BR 4319 SPL
M 75599	F-35303	M 77900	BR 3216.3 SPL
M 75788	F-29934	M 77024	BR 322424 SPL (18 NEEDLES)
M 75888	F-22648	M 77299	BR 5525 / NSC SPEED FRAME
M 76088	F-21460	M 78022	EJECT 200120
M 75688	F-32664	M 78270	BR 3220 SPL (16 NEEDLES WITH CLIP)
M 77400	F-23482	M 78320	BR 3220 (16 NEEDLES)
M 75900	UL 32-0036128	M 78424	BR 3224 (16 NEEDLES)
M 76311	NFB 15Z-3	M 76877	2B 18-3
M 76411	NFB 18-2	M 77100	BR 320024 SPLS
M 76511	2B 19Z-3A	M 78188	BR 32-01-06
M 76611	NFB 19Z-1B	M 78525	BR 3625 SPL
M 76711	NFB 16-2	M 78626	BR 3626 SPL
M 76811	2B 18-3	M 78722	BR 213022

## Special Bearings for Textile

Designation	Interchangeable / Application Part No.	Designation	Interchangeable / Application Part No.
BT 2015	NTN SBX0433	R 469	KDL 16/12
BT 2019	SRO 12289/ 409080120	FC 1506	F 208897
BT 2004	393106	RAE 25 KRRB	-
GRAE 45 NPPB	406507392	RAE 38 NPPB(80X38)	-
GRAE 45 NPPB SPL	0650- 7392	GE 30 KRRB	-
GRAE 38 NPPB (85x 38)	TIN ROLLER BEARING	GE 35 KRRB	-
GRAE 38 NPPB (80x 38)	TIN ROLLER BEARING	GE 40 KRRB	-
519484ZZ	40901008	GE 50 KRRB	-
519447A	409010070	UCT 205	-
519510	409080410	G 1103 KRRB	-
AESL 202-010	RESHMI PA WINDERS	G 1107 KRRB	-
R 451	NK 50/20 (F 2687)	G 1115 KRRB	-
R 452	NK 121816(F 1751)	G 1203 KRRB	-
R 462	12.24 SPL	UC 211	-
R 465	7 x 19 x 18	UC 211 SPL	-
R 468	KDL 12/12	UCS 212 SPL	-





## Winding Bearings

Designation	Interchangeable
WB - 6 - 14 - 24 - 41	-
WB - 16 - 7.5 - 20 - 40	DR 1620 - 0958201
WB - 16 - 7.5 - 20 - 28	DR 1620 - 0958251
WB - 16 - 7.5 - 20 - 28 OG	DR 1620 - 0958251 OG
WB - 17.79/ 18 - 7.8 - 16 - 35	CR 2 - 0035 905
WB - 18 - 7.5 - 22 - 30	ZL 17 - 0016949
WB - 19 - 8 - 22 - 35	-
WB - 19 - 9 - 22 - 34	DR 1922 - 0958601
WB - 19 - 9 - 22 - 34 OG	DR 1922 - 0958601 OG
WB - 19 - 9 - 22 - 35	-
WB - 19 - 9 - 22 - 42	DR 1922 - 0958651
WB - 22 - 9.3 - 24 - 41.5	-
WB - 24 - 11.1 - 34 - 51.5 (12111)	-
WB - 25 - 8 - 41.7 - 60	-
WB - 16 - 7.5 - 25 - 50 OG	-
WB - 16 - 7.5 - 25 - 42	-



## Jockey Pulley Bearings

Designation	Interchangeable
SR 6	BSR 61
SR 7	70 MM PULLLY
BSR 70	BSR 70
BSR 71	BSR 71
BSR 72	BSR 720
SR 90	-



## Two Half Cages

Designation	Dimensions		
	d	D	b
K - 16/13 D	16	20	13
K - 21/13 D	21	25	13
K - 21/17 D	21	25	17
K - 24/13 D	24	28	13
K - 30/13 D	30	35	13



## Two Half - Corresponding Outer Rings

Designation	Dimensions		
	d	D	b
BE 202420	20	24	20
BE 252920	25	29	20
BE 252926	25	29	26
BE 252940 SP	25	29	40
OR 252926	25	29	26
BE 253240 SP	25	32	40
BE 283220	28	32	20
BE 354020	35	40	20



## Special Bearings Assemblies for TFO Spindles

Designation	Interchangeable	Designation	Interchangeable
J 193	161 - 2B12Z -1CT(Murata TFO)	R 453	S 1032
J 194	161 - 2B12Z -2CT(Murata TFO)	R 454	R 1032
J 186	F 295540-01	R 455	Y 1032
J 188	JU06	R 461	108-2381
J 189	F 92529	R 462	12.24 SPL
J 190	F 18374506	R 464	RLF 204050
R 407	Surer Almaa 160B	R 465 (7x19x18x11)	F 214169
R 407.01	AB 394215 A	R 470	F 29526801
R 407.02	396885	R 474	Z 123832
R 484	SPL 1226	R 475	Z 123852
R 445	310-4715	R 480	F 235949



## Special Bearings for Rubbing & Finishing Frames

Designation	Interchangeable
SF 24	ST Andrea Sf24
SF 24 R	ST Andrea Rf2a
SF 24 SPL	-
101.3303	614 300 120
101.3303 SPL	-
R 464	RFL 204050





## Contact Us :



Survey Nr 49, Lakhtar Highway,  
Zamar, Surendranagar 382775,  
Gujarat, India.



+91-93167-50476



[sales@mrsbearings.com](mailto:sales@mrsbearings.com)



[www.mrsbearings.com](http://www.mrsbearings.com)

"Every care has been taken to ensure the correctness of the information contained in this publication but no liability can be accepted for any errors or omissions. The Company reserves the right to make technical changes. The data is provided for information purpose only & without any intent to infringe. This publication or parts thereof may not be reproduced without our permission."